



# NetSupport Protect

NetSupport Protect is the number one choice for technology coordinators and IT administrators to protect Windows® operating systems and desktops from unwanted or malicious changes.

NetSupport Protect provides a secure, reliable and productive computer environment ideal for shared use systems and the classroom. With its extensive list of security features and intuitive format, administrators can use NetSupport Protect to guarantee that users are getting the most beneficial use of their computer learning experience.

NetSupport Protect prevents users from deleting critical files and applications, making unauthorised changes to the desktop, saving unwanted programs and corrupting the operating system.

With NetSupport Protect, you can feel confident that unauthorised changes to a system, whether accidental or malicious, won't become an issue or impact on the productivity of your computer systems.

NetSupport Protect provides a proactive, rather than reactive solution to the challenges faced. The philosophy of the product is to prevent changes to the desktop environment and avoid the need to rely on "repair" based solutions that are more costly and have a greater maintenance overhead.

Using NetSupport Protect, IT staff can create a secure desktop environment where system configuration and access from external sources are protected, where users can use available applications but are shielded from system resources and the temptation of investigating the workings of the desktop.

Available fully localised in English, German, French, Spanish and Italian, NetSupport Protect is the perfect solution for protecting your technology investment.

## FEATURES:

**Protect Files & Folders**

**Prevent delete and rename**

**Hide Files and Folders**

**Restrict changes to the desktop**

**Protect the OS and system settings**

**Lock Control Panels and tools**

**Lock specified Applications**

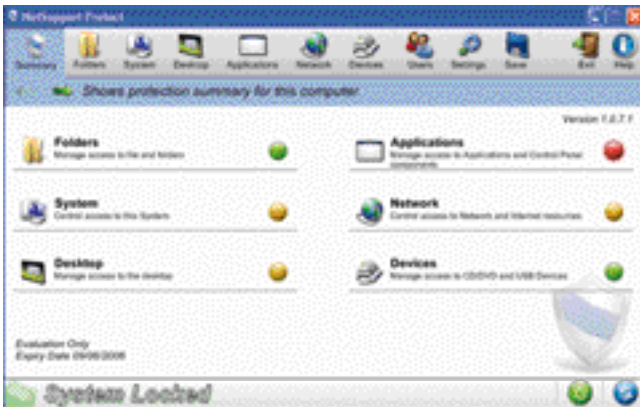
**Control Network Access**

**Prevent file creation by type**

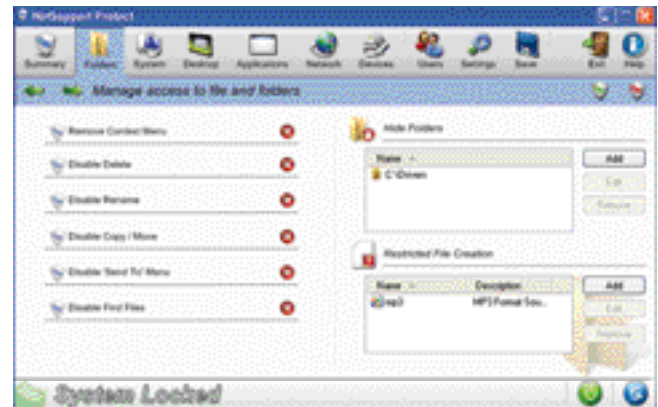
**Control access to USB devices**

**Control access to CDRW / DVDs**

**Control Internet downloads**



Clear and Concise security indicators are provided.



Preserve files on your systems and hide system content.

## Prevent

Teachers need to manage students who are using computers in a lab or multi-desktop classroom to ensure that they are learning and spending time on their assigned tasks.

Children want to learn, and often the best way is to experiment. Lab computers may be used four or five times a day for different classes, so really can't afford to endure too much practical experimentation.

## Protect

A corporate network is only as secure as the security provided. Why suffer the downtime of systems needing to be re-imaged or restored when NetSupport Protect avoids the problem arising.

Control what type of content is downloaded, allow users to copy work files from a memory stick or CDR but block potentially dangerous applications.

## Preserve

Computers in a public workspace, Internet Café, Tradeshow or a call centre where multiple users have access to a single PC, all need additional security to protect the fabric of the OS.

Laptops away from the office need to remain protected, to avoid new content being migrated back to the network each time the user returns to the office.

Key feature highlights in NetSupport Protect are:

- Prevent copying, deletion and renaming of files and folders.
- Hide folders and restrict creation of defined file types.
- Restrict changes to the desktop, taskbar and system settings.
- Restrict shutdown, logoff, lock and password changes.
- Protect the operating system and computer settings.
- Lock control panels, task manager, command prompt and registry.
- Restrict user-defined applications from running.
- Restrict available network drives, drive mappings and network neighbourhood.
- Prevent access to windows systems tools.
- Prevent web browsers from running.
- Restrict changes to the system printers.
- Control access to USB and CD/DVD drives.
- Disable USB devices, allow read only or prevent application launch.
- Prevent users from installing unauthorised software.
- Apply policies to all users, or exclude specified accounts.
- Share security configurations across a network.

From the makers of NetSupport School, the market leading classroom instruction and monitoring software. NetSupport technology is installed on over 5,000,000 systems worldwide.

Download a trial copy today and see just how easy it is to protect your computers.



## One-Click Recovery

NetSupport Protect now includes as standard integrated hard disk protection and roll back technology. In addition to the existing functionality that keeps users on task by locking down desktop configuration, the product now also effortlessly protects your operating system and associated files from accidental or malicious deletion and provides a mechanism for automatic restoration on re-boot.

When the new hard-disk recovery feature is enabled, all system files and folders will be continuously monitored and, when required, the system will restore back to a previous point in time quickly and transparently. NetSupport Protect's recovery functionality also allows you to specify folders that are excluded from rollback monitoring and, as such, are always preserved. Whether it's a complete software failure requiring total restoration or specific files, the new recovery feature provides complete flexibility. Needless to say, system administrators can also install, manage and perform software restoration remotely.

Unlike alternative disk protection systems, NetSupport Protect monitors the disk for changes rather than initially taking a complete snapshot of a computer system. This process results in the almost instantaneous creation and restoration of an image.

NetSupport Protect now offers twice the level of desktop security and protection - desktop lockdown and hard disk protection and recovery - in a single and easy-to-use package.

### Summary of key features:

- Instantly restores your hard disk to an earlier point in time.
- Offers do-it-yourself disaster recovery.
- Helps users stay productive - even if their operating system will not boot.
- Rescues and restores lost or damaged files, folders and corrupted programs.
- Works with your existing security products such as anti-virus programs.
- Provides a secure test platform.
- Restrict user-defined applications from running.
- Uses minimal system resources and hard drive storage.
- Easy to install and centrally manage.

### Benefits:

- Saves countless hours of troublesome and unnecessary service calls.
- Works in a fraction of the time of other re-imaging/restoration products.
- Gives teachers more time to teach by eliminating careless or malicious activity.
- Saves valuable network disk space when images need to be stored.
- Reduces or eliminates technical intervention for OS and software-related problems.
- Makes all user PCs' look and behave the same.
- Simply reboot to restore.

**NetSupport**

info@netsupportsoftware.com  
sales@netsupportsoftware.com

www.netsupportsoftware.com

Authorised Partner: