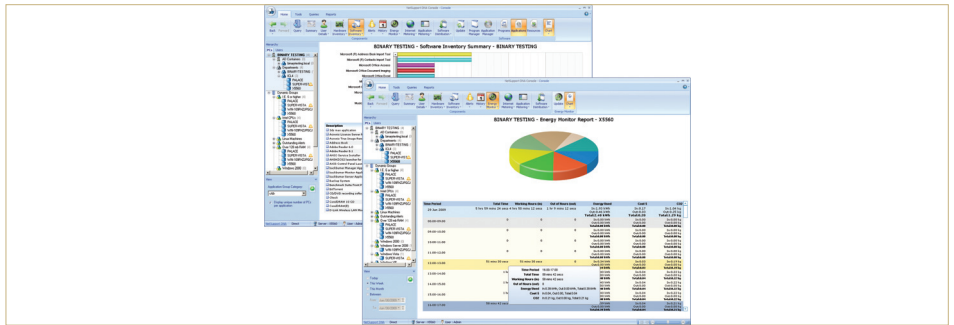


## NetSupport DNA 3.0



# PRODUCT REVIEW PRODUCT REVIEW PRODUCT REV

All businesses need to maximise their investment in IT; asset management can play an important role by allowing administrators to keep track of all connected hardware and software, helping with effective management of the estate. NetSupport's DNA (Dynamic Network Administration) has always offered a very cost effective solution and it is highly suited to SMBs. This latest version adds a number of unique capabilities to an already impressive features list.

NetSupport offers a range of options with the DNA starter pack, including user management, full hardware and software inventory, alerting, and the new Energy Monitor. Energy Monitor is a timely new feature, allowing a close eye to be kept on power usage and identifying areas where energy savings could be made. Configuration is simple as you provide information on estimated energy consumption for servers, PCs, and portable devices, along with the cost per kW for working and non-working hours, and CO<sup>2</sup> emissions per kWh.

DNA's local agent keeps track of when a system is running, switched off or in hibernation mode, allowing it to keep a running tally of power consumption based on system activity. From the DNA console you can see how much power monitored systems are consuming on an hourly basis, and also run reports to see where, for

example, systems are being unnecessarily left switched on overnight.

Traditionally, remote sites have been difficult to bring into asset management schemes, but DNA now has this covered. The new Gateway comprises server and client components that are installed on systems on each side of the remote link. Acting as a proxy for remote systems, the Gateway client communicates securely with the server which provides a conduit to the main DNA server.

DNA is a cinch to deploy as it runs a discovery over the network and provides tools for pushing an agent to selected systems. As soon as the agent has been loaded, inventory details are passed back to the DNA database where they can be viewed and interrogated from the console. The newly designed console is very easy to use and offers a summary view with graphs showing connection status and detected changes to hardware and software, along with tables revealing alerts, the top URLs visited, and the most popular applications.

Dynamic grouping makes light work of organising systems as membership can be based on hardware or software characteristics, and these are automatically updated as new systems appear, or others change their configuration. NetSupport's inventory is extremely accurate and software asset management has been improved to

allow application suite licenses to be more easily tracked and managed. We also found it easier to search for and record, specific file types, allowing us to get a better picture of the data being stored on our client systems helping with storage utilisation.

The Internet and application metering components are well worth the extra outlay as they allow you to closely monitor and control both browser activity and software usage. You can passively monitor activity to gauge general usage and when you're ready, simply select web sites and applications that DNA has recorded, and move them to approved or restricted lists. DNA's alerting keeps you informed; pop up messages from the System Tray and emails notify the user of problems that have been spotted, or changes made on monitored systems. For example, new software being installed or hardware being removed.

This latest version of NetSupport DNA delivers an impressive range of asset management tools that are extremely easy to deploy. Value has always been a high priority and DNA is one of the first products in its class to bring power monitoring and reporting into the equation. **NC**

**Product:** NetSupport DNA 3.0  
**Supplier:** NetSupport Software  
**Telephone:** 01778 382270  
**Web site:** [www.netsupportsoftware.co.uk](http://www.netsupportsoftware.co.uk)  
**Price:** 100 users, £1,680 excluding VAT